

USM-442PW

3-Position Reclining Lift Chair

The USM's 442PW is a luxury lift chair recliner that is specifically designed to perfectly support a petite person while also offering an extra 5 inches of seat width over standard models. Experience the comfort and convenience of a smooth lift mechanism that is also powerful enough to gently lift up to 375 lbs. The New Dual Motor Sync System will ensure that your chair can withstand repetitive use and last for years to come. In addition to being a well-engineered lift chair, the 442PW also offers the therapeutic benefits of a relaxing, 3-position recliner that can be adjusted for maximum pressure relief. Take the strain out of sitting and standing and enjoy a 7 year pro-rated warranty with the 442PW.



442PW Features

- Three-position
- Hardwood Frame
- Perfect for Petite People
- 1 Year In-Home Parts & Service
- Fire Retardant

Weight capacity: 375 lbs.

Overall width: 39"

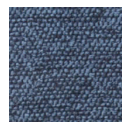
Seat to floor: 19"

Seat depth: 19"

Seat width: 24"

Top of back to seat: 23.5"

442PW Fabric Choices



Black Cherry



Pacific



Stone



Walnut