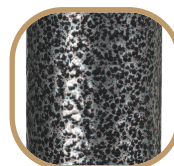


CRUISER III

REMOVABLE FLIP
BACK ARMS
ALLOW FOR
EASY TRANSFER.



COMES WITH FLIP BACK
REMOVABLE ARMS.



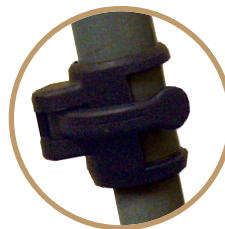
SILVER VEIN
FINISH ON
FRAME.
(ARMS AND
RIGGINGS
ARE BLACK)

**NOW
COMES WITH
RIGGINGS IN
CARTON!**

Cruiser III
Lightweight, Dual Axle (K0003)
(Has replaced Cirrus III)

FEATURES:

- Weighs under 36 lbs. (excluding front riggings).
- Removable flip back arms allow for easy transfer.
- Carbon steel frame with silver vein finish.
- New frame style eliminates seat guides and allows for custom back inserts and accessories.
- **Tool free adjustable front riggings (footrests, legrests).**
- Composite, Mag-style wheels are lightweight and maintenance free.
- Precision sealed wheel bearings in front and rear ensure long lasting performance and reliability.
- Dual axle provides easy transition of seat height to hemi level.
- 8" front casters are adjustable in 3 positions.
- Black nylon upholstery
- Comes with push to lock wheel locks.
- Limited Lifetime Warranty.



NEW TOOL FREE
ADJUSTABLE
LENGTH FRONT
RIGGINGS!

Due to product improvements and changes, all images in this catalog are subject to change.

**Important Notice: Item numbers that display an asterisk (*) reflect an item that will be discontinued or package change.*