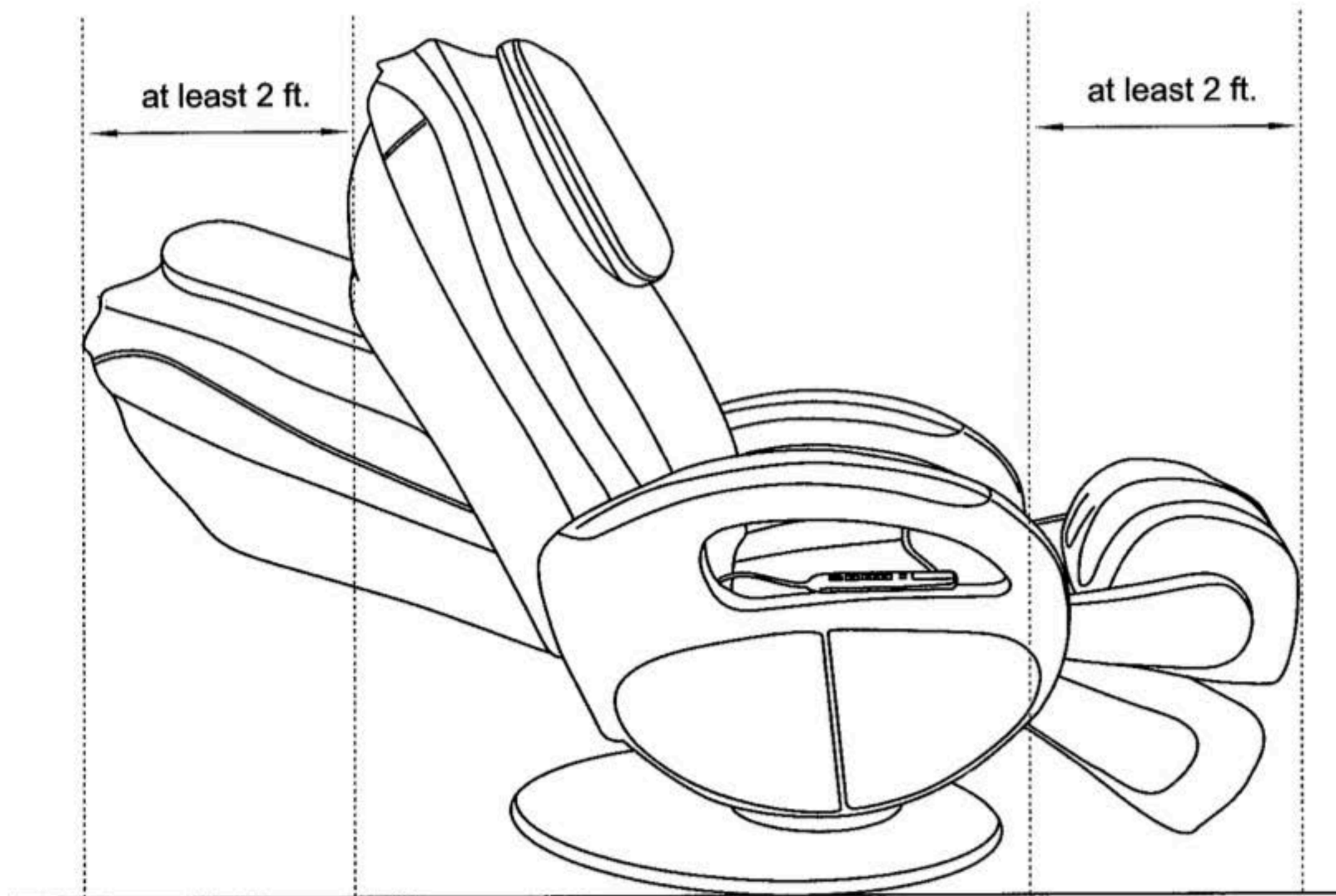


### Step 1:

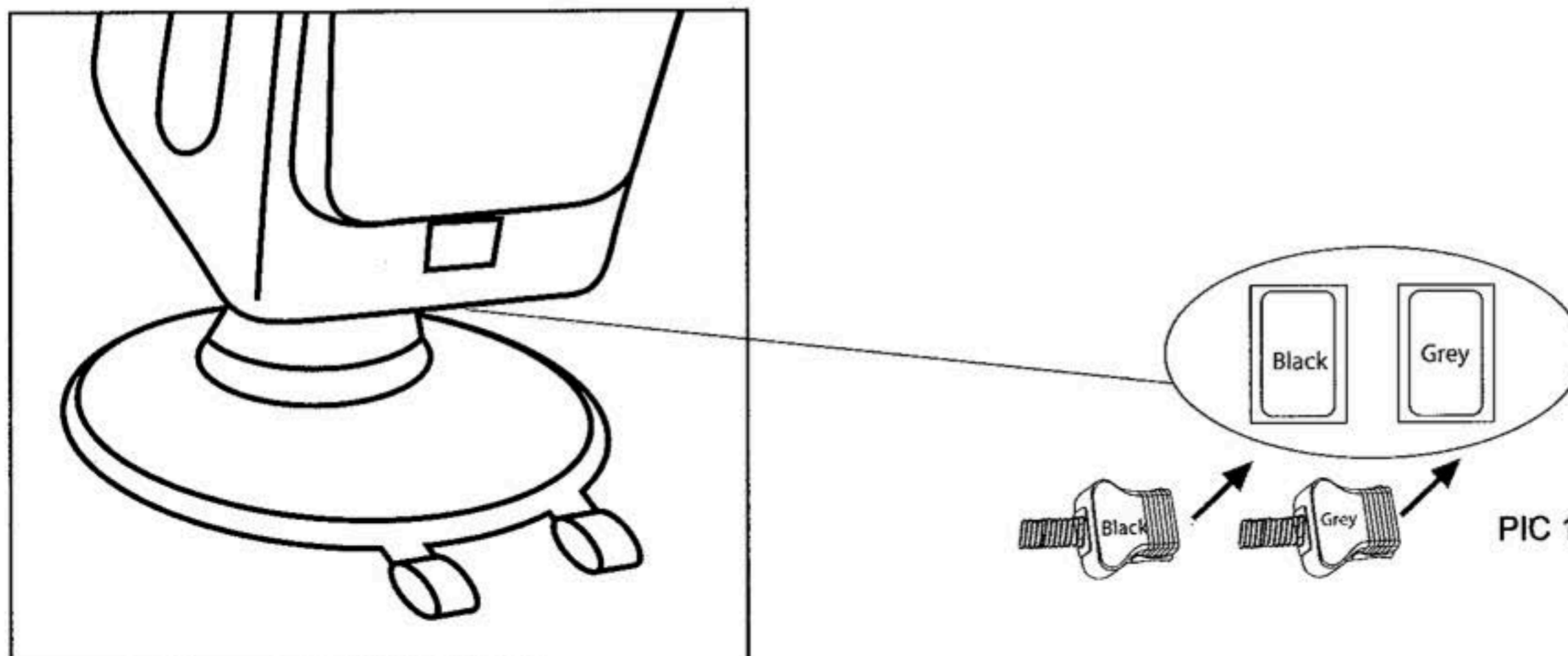
When setting up the chair, make sure there is at least two feet of space behind the backrest and two feet of space in front of the footrest.



### Step 2:

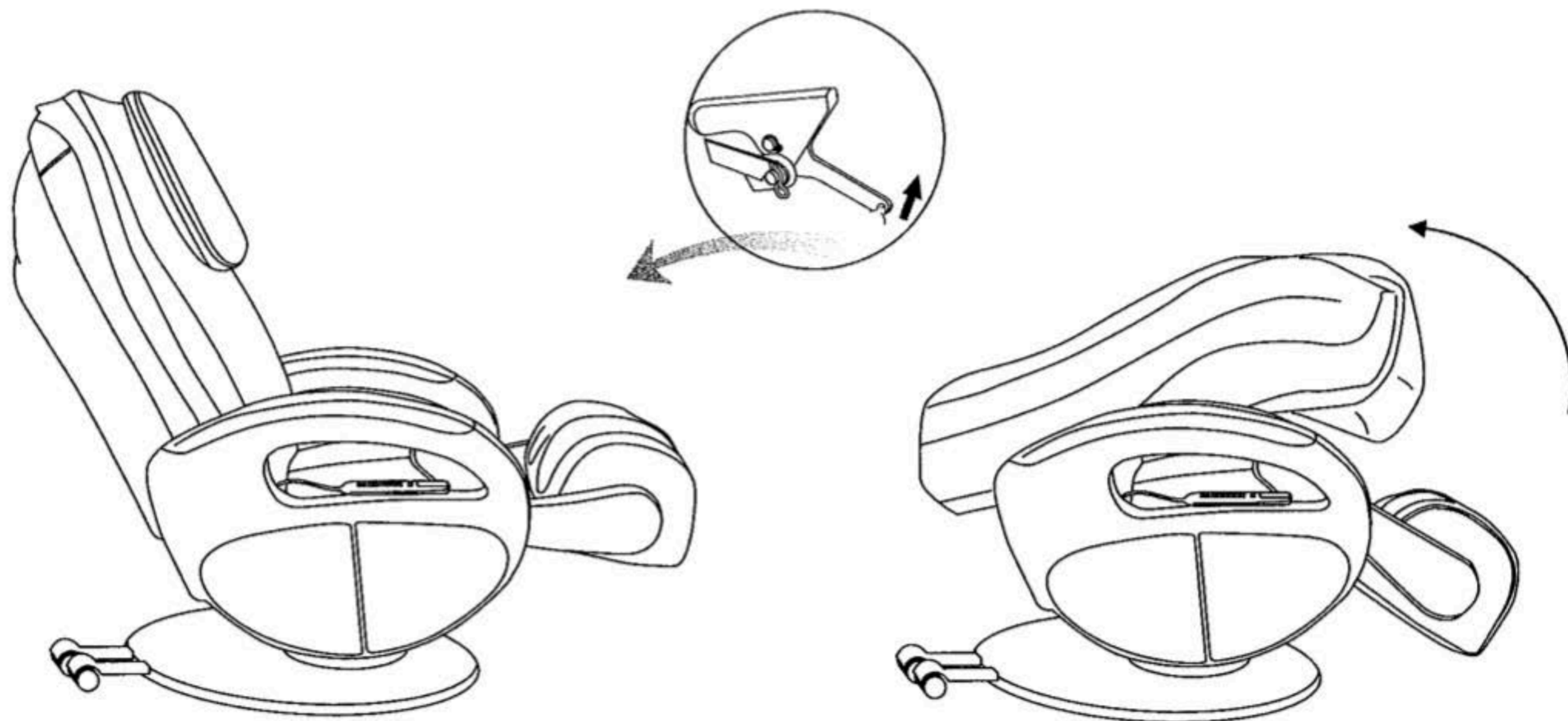
Insert the wire plugs into the seat as demonstrated in PIC 1.

Note: Insert black to black and gray to gray, otherwise damage to the chair may result.



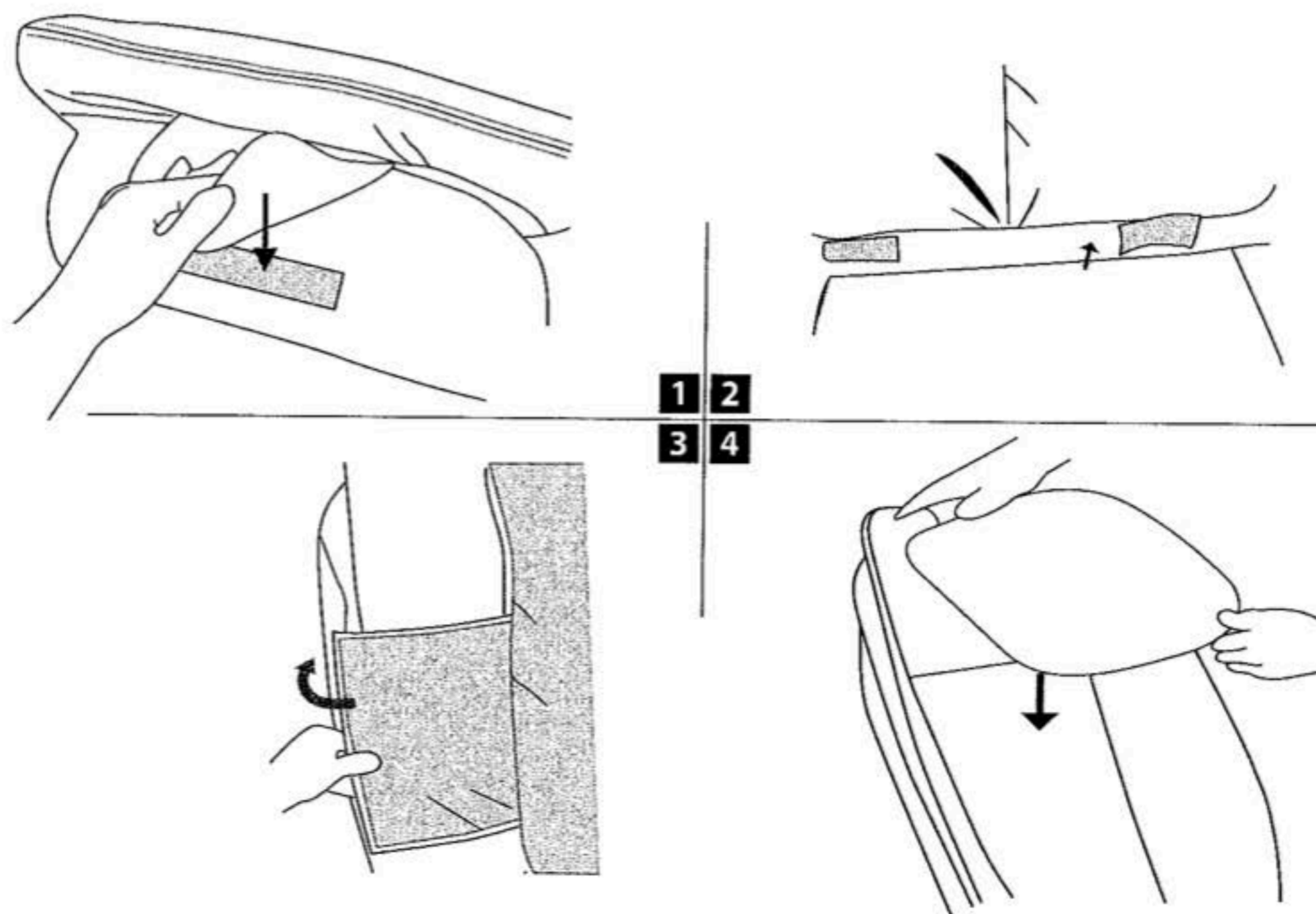
**Step 3:**

Unfold the backrest until you hear a “click” sound.



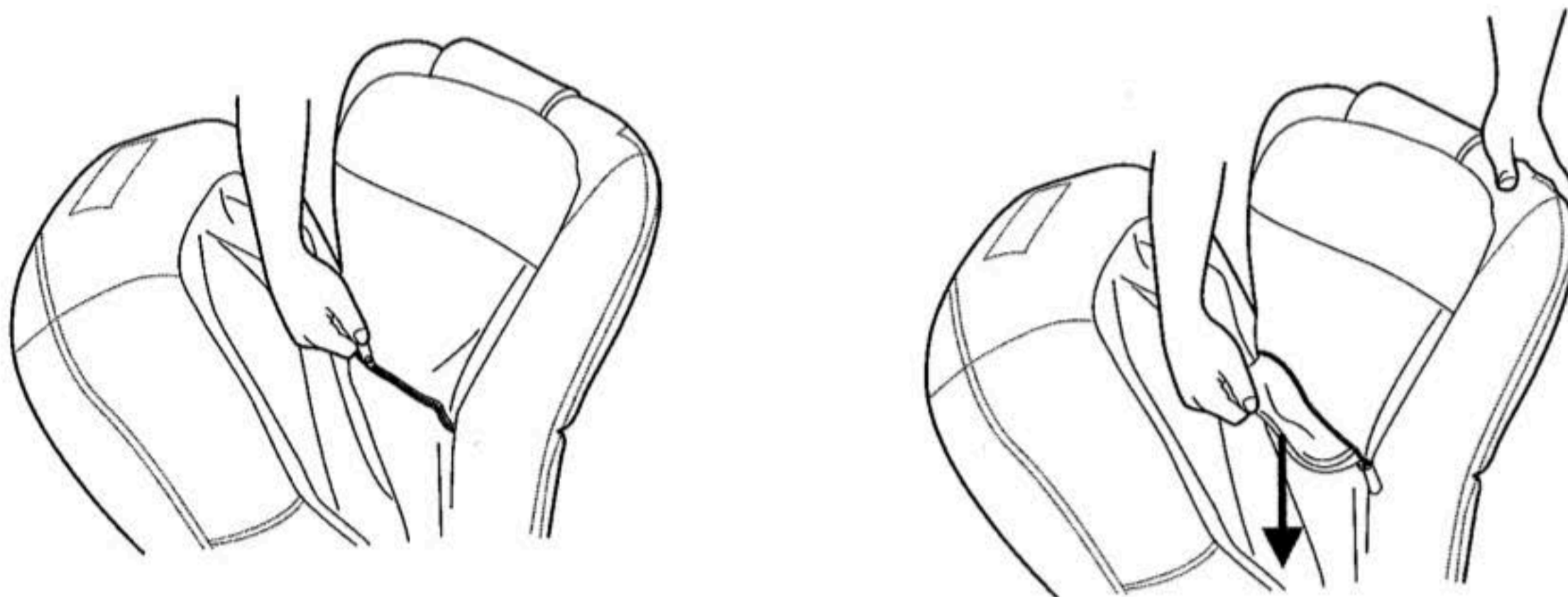
**Step 4:**

Attach the backrest pad and the pillow pad with the zipper, hook and loop fasteners.



### Step 5: (Optional)

Remove the spare pad located in the backrest cover for a deeper massage.



## 05 Moving the Chair

1. Restore the footrest to its original position.
2. Hold down on the top of the backrest and tilt approximately 45 degrees. Move the chair using the wheels as the fulcrum.

### Note:

- 1) Always return the footrest to its original length and restore it to its original position before moving the chair. Otherwise, injury during movement may result.
- 2) Do not move the chair while a person is seated on it.
- 3) Place a mat on the floor and gently roll the chair over it to avoid damaging the floor.

